

L2 Web Smart Gigabit/10Gigabit Ethernet Switch

GS-2240 Series

Quick Installation Guide

Table of Contents

1. Introduction	3
2. Package Contents	4
3. Requirements	5
4. Terminal Setup	6
5. Logon to the Console	7
6. Configuring IP Address via the Console	8
7. Saving the Configuration via the Console.....	10
8. Starting Web Management	11
9. Saving Configuration via the Web	14
10. Recovering Back to Default Configuration	15
11. Customer Support.....	16

1. Introduction

Thank you for purchasing PLANET L2 Web Smart Gigabit/10Gigabit Ethernet Switch. The description of this model is shown below:

- ◆ GS-2240-24T4X 24-port 10/100/1000T + 4-port 10G SFP+ Web Smart Switch
- ◆ GS-2240-48T4X 48-port 10/100/1000T + 4-port 10G SFP+ Web Smart Switch

“Managed Switch” is used as an alternative name in this Quick Installation Guide.

2. Package Contents

Open the box of the Managed Switch and carefully unpack it. The box should contain the following items:

- The Managed Switch
- Quick Installation Guide
- RJ45 to RS232 Cable
- Rubber Feet
- Two Rack-mounting Brackets with Attachment Screws
- Power Cord
- SFP Dust-proof Caps

If any item is found missing or damaged, please contact your local reseller for replacement.

3. Requirements

- Workstations running Windows XP/2003/Vista/7/8/10/2008, MAC OS X or later, Linux, UNIX, or other platforms are compatible with TCP/IP protocols.
- Workstations are installed with Ethernet NIC (Network Interface Card)
- **Serial Port Connection** (Terminal)
 - The above Workstations come with COM Port (DB9) or USB-to-RS232 converter.
 - The above Workstations have been installed with terminal emulator, such as Hyper Terminal included in Windows XP/2003.
 - **Serial cable** -- One end is attached to the RS232 serial port, while the other end to the console port of the Managed Switch.
- **Ethernet Port Connection**
 - **Network cables** -- Use standard network (UTP) cables with RJ45 connectors.
 - The above PC is installed with **Web browser** and JAVA runtime environment plug-in.



Note

It is recommended to use Internet Explorer 8.0 or above to access the Managed Switch. If the Web interface of the Managed Switch is not accessible, please turn off the anti-virus software or firewall and then try it again.

4. Terminal Setup

The GS-2240 switch series is equipped with a console interface for local switch setup and maintenance. To configure the system, connect a serial cable to a **COM port** on a PC or notebook computer and to the RJ45 type of the console port of the Managed Switch.

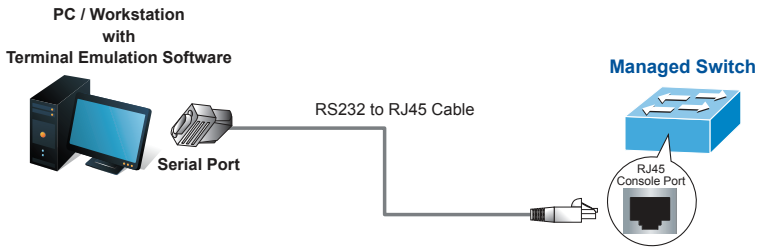


Figure 4-1: Managed Switch Console Connectivity

A terminal program is required to make the software connection to the Managed Switch.

1. Run terminal program on the OS.
2. When the following screen appears, make sure that the COM port should be configured as:

Baud: 115200
Data bits: 8
Parity: None
Stop bits: 1
Flow control: None

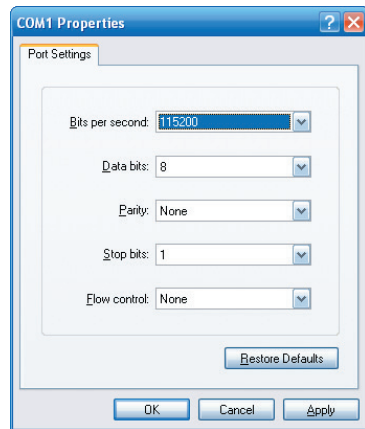


Figure 4-2: COM Port Configuration

5. Logon to the Console

Once the terminal is connected to the device, power on the Managed Switch and the terminal will display “running testing procedures”. Then, the following message asks to log-in user name and password. The factory default user name and password are shown as follows, and the login screen in Figure 5-1 appears.

```
Username: admin  
Password: admin
```

```
Username: admin  
Password:  
GS-2240-24T4X#
```

Figure 5-1: Managed Switch Console Login Screen

The user can now enter commands to manage the Managed Switch. For a detailed description of the commands, please refer to the following chapters.



Note

1. For security reason, please change and memorize the new password after this first setup.
2. Only accept command in lowercase letter under console interface.

6. Configuring IP Address via the Console

The Managed Switch is shipped with default IP address shown below:

```
IP Address: 192.168.0.100  
Subnet Mask: 255.255.255.0
```

To check the current IP address or modify a new IP address for the Switch, please use the procedures as follows:

■ Show the current IP address

1. At the "GS-2240 Series#" prompt, enter "show ip interface vlan1 brief".
2. The screen displays the current IP address, subnet mask and gateway as shown in Figure 6-1.

```
Username:admin  
Password:  
GS-2240-24T4X#show ip interface vlan1 brief  
Interface IP-Address      Status Protocol  
vlan1     192.168.0.100  up     up
```

Figure 6-1: IP Information Screen

■ Configuring IP address

3. At the "GS-2240 Series#" prompt, enter "configure terminal".
4. At the "GS-2240 Series(config)#" prompt, enter the following command and press <Enter> as shown in Figure 6-2.

```
GS-2240 Series(config)# ip route 0.0.0.0/0 192.168.1.254
GS-2240 Series(config)# interface vlan1
GS-2240 Series(config-vlan1)# ip address 192.168.1.100/24
```

The previous command would apply the following settings for the Switch.

IP Address: **192.168.1.100**
Subnet Mask: **255.255.255.0**
Gateway: **192.168.1.254**

```
Username:admin
Password:
GS-2240-24T4X#configure terminal
GS-2240-24T4X(config)#ip route 0.0.0.0/0 192.168.1.254
GS-2240-24T4X(config)#interface vlan1
GS-2240-24T4X(config-vlan1)#ip address 192.168.1.100/24
```

Figure 6-2: IP Address Screen

5. Repeat Step 1 to check if the IP address is changed.

If the IP is successfully configured, the Managed Switch will apply the new IP address setting immediately. You can access the Web interface of the GS-2240 Switch Series through the new IP address.



Note

If you are not familiar with console command or the related parameter, enter "?" anytime in console to get the help description.

7. Saving the Configuration via the Console

In the switch, the running configuration file is stored in the RAM. In the current version, the running configuration sequence of running-config can be saved from the RAM to FLASH by **writing** the command or copying the **running-config startup-config** command, so that the running configuration sequence becomes the startup configuration file, which is called configuration save.

1. At the "GS-2240 Series#" prompt, enter "**copy running-config startup-config**" as shown in Figure 7-1.

```
Username:admin
Password:
GS-2240-24T4X#copy running-config startup-config
Building configuration...
[OK!]
```

Figure 7-1: The Configuration Screen

8. Starting Web Management

The following shows how to start up the **Web Management** of the Managed Switch. Note the Managed Switch is configured through an Ethernet connection. Please make sure the manager PC must be set on the same **IP subnet address**.

For example, the default IP address of the Managed Switch is **192.168.0.100**, then the manager PC should be set at **192.168.0.x** (where x is a number between 1 and 254, except 100), and the default subnet mask is 255.255.255.0.

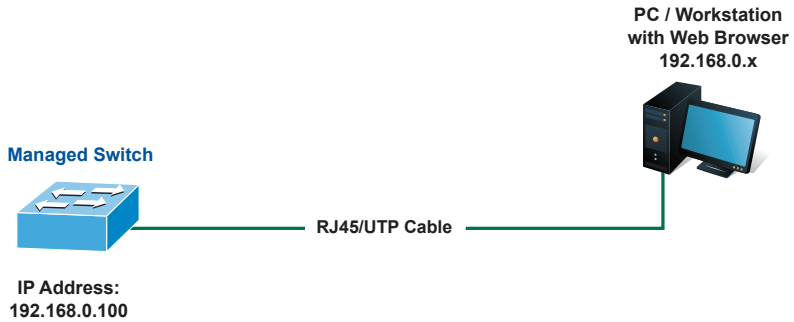


Figure 8-1: IP Management Diagram

Logging in to the Managed Switch

1. Use Internet Explorer 8.0 or above Web browser and enter IP address **http://192.168.0.100** to access the Web interface.
2. When the following dialog box appears, please enter the default user name and password "admin". The login screen in Figure 8-2 appears.

Default Username: **admin**

Default Password: **admin**



Figure 8-2: Login Screen

3. After entering the password, the main screen appears as Figure 8-3 shows.

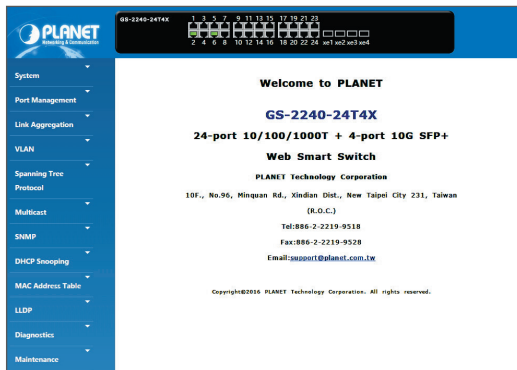


Figure 8-3: Web Main Screen of Managed Switch

The Switch Menu on the left of the Web page lets you access all the commands and statistics the Managed Switch provides.

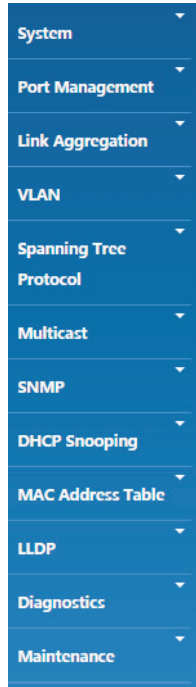


Figure 8-4: Switch Menu

Now, you can use the Web management interface to continue the Switch management.

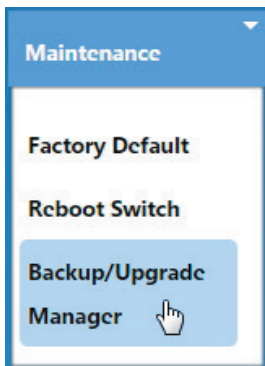
Please refer to the user's manual for more.

9. Saving Configuration via the Web

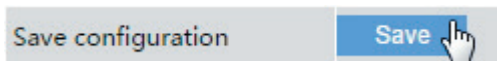
In the Managed Switch, the running configuration file is stored in the RAM. In the current version, the running configuration sequence of running-config can be saved from the RAM to FLASH by **"Save Configurations to FLASH"** function, so that the running configuration sequence becomes the startup configuration file, which is called configuration save.

To save all applied changes and set the current configuration as a startup configuration, the startup-configuration file will be loaded automatically across a system reboot.

1. Click **"Maintenance > Backup/Upgrade Manager"** to login "Backup/Upgrade Manager" page.



2. Press the **"Save"** button to save running configuration to start up configuration.



10. Recovering Back to Default Configuration

- IP Address has been changed or admin password has been forgotten –

To reset the IP address to the default IP address **“192.168.0.100”** or reset the login password to default value, press the hardware **reset button** on the front panel for about **10 seconds**. After the device is rebooted, you can login the management Web interface within the same subnet of 192.168.0.xx.

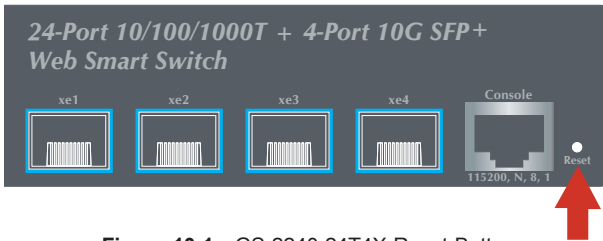


Figure 10-1: GS-2240-24T4X Reset Button

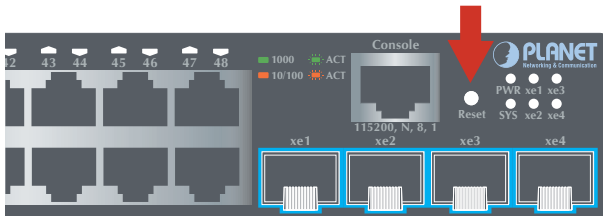


Figure 10-2: GS-2240-48T4X Reset Button

11. Customer Support

Thank you for purchasing PLANET products. You can browse our online FAQ resource and User's Manual on PLANET Web site first to check if it could solve your issue. If you need more support information, please contact PLANET switch support team.

PLANET online FAQ:

<http://www.planet.com.tw/en/support/faq.php?type=1>

Switch support team mail address:

support_switch@planet.com.tw

GS-2240 Series User's Manual:

<http://www.planet.com.tw/en/support/download.php?type1=1&model=&type=3>



(Please select your switch model name from the Product Model drop-down menu)

Copyright © PLANET Technology Corp. 2016.

Contents are subject to revision without prior notice.

PLANET is a registered trademark of PLANET Technology Corp. All other trademarks belong to their respective owners.